

## Babito<sup>®</sup> contains feed intake enhancers

**Vitamex** has since long understood the importance of attractive feed in relation to feed intake. Research on the use of natural and artificial flavours to improve feed intake, has led to the creation of the flavours in **Babito**<sup>®</sup>. Together with the unique structure it guarantees a high feed intake. Not only the daily weight gain but also the maturation of the digestive system takes the benefit.

### SPECIALLY DEVELOPED FOR PIGLETS

**Babito**<sup>®</sup> is an energy rich creepfeed in meal form for newborn piglets.

• **Use:**

- Feed *ad libitum* to piglets from birth till 1 week before weaning.
- When intake is high enough, switch to a **Vitamex** prestarter (**Crespina AP** or **Safina** or **Babipops**) or mix with a **Vitapops** starterfeed.
- Always supply fresh and in limited amounts.
- Use clean feeders.
- Supply clean drinking water.
- A mix of 1/3 of **Babito**<sup>®</sup> and 2/3 of water, supplied a couple of times a day, will help the piglets to shift from sow milk to solid feed.



• **Application:** Total intake of **Babito**<sup>®</sup> will be about 300 grams per piglet.

• **Packaging:** 25 kg bags

• **Storage:** Store cool and dry

Complies with Royal Decree of February, 8, 1999 (BS 21.04.99) and Ministerial Decree of February, 12, 1999 (BS21.04.99) concerning trade and use of substances destined for animal feeding.

### For more information

Vitamex n.v. • Booiebos 5 • B-9031 Drongen - Belgium

T +32 (0)9 280 29 00 • F +32 (0)9 282 34 27 • E info@vitamex.com • www.vitamex.com

**babito**<sup>®</sup>  
earliest feedintake

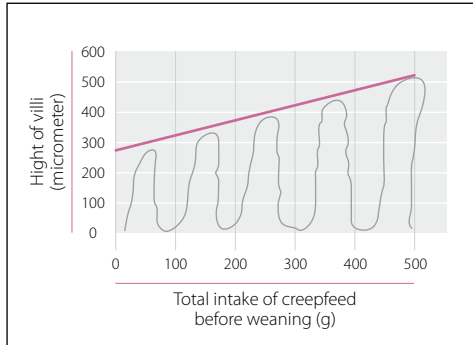
### PIGS



*At the heart of feed*

**vitamex**  
safe & innovative nutrition

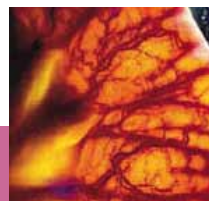
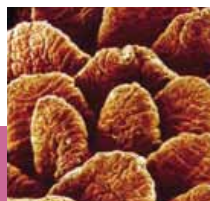
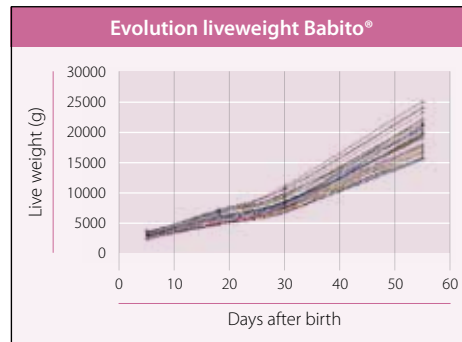
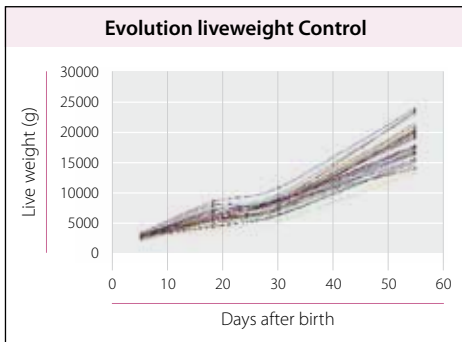
## Using Babito® from the early beginning Intake of solid feed is important



From a survey conducted by Vitamex, contacting 300 pig breeders, it could be concluded that there is a strong relationship between the age at which first solid feed is consumed before weaning and the incidence of diarrhoea after weaning. All nutrients in the feed have to be absorbed through the villi in the small intestine before the piglet can use them for growth. Total absorption is closely related to the total surface of the villi. It is proven that the intake of solid creepfeed enhances the development of villi. Nutrients not absorbed by the time they arrive in the large intestine can cause fermentation and diarrhoea.

## Prepare the animal for weaning

In the following graphs, the difference between a normal feeding scheme (control) and a feeding scheme based on Babito® can be clearly seen. Every line in the graph represents the growth curve of one piglet.



Where Babito® is used, it is clear that:

- The average weight at weaning and at 8 weeks is substantially higher.
- There is no delay in growth at weaning.
- Higher uniformity is reached at 8 weeks.
- Lower mortality, because of an improved health status of the pigs, is obtained.



	Control	Babito®
<b>Number of piglets</b>	120	<b>120</b>
<b>Average weight (kg)</b>		
	at birth	<b>1.60</b>
	at weaning (4 weeks)	<b>7.59</b>
<b>Average daily growth</b>		
	from birth till weaning (g)	<b>213</b>
	in %	<b>105</b>
<b>Average weight (kg)</b>		
	after 8 weeks	<b>19.29</b>
<b>Average daily growth</b>		
	from weaning till 8 weeks (g)	<b>418</b>
	in %	<b>106</b>
<b>Variation in final weight</b>		
	in kg	<b>2.36</b>
	in %	<b>12.30</b>
<b>Mortality</b>		
	during lactation (%)	<b>6.6</b>

## Babito® contains immunoglobulines

Both from literature as from our own research, it has been found that immunoglobulines are of great importance to increase vitality in newborn piglets. Due to the higher litter size, less piglets can take enough immunoglobulines via the colostrum. As such, an extra addition of immunoglobulines via special feeds or supplements can give an extra nutritional support. The addition of these molecules to Babito® has improved the weaning weight with 500 g per piglet.

## Babito® contains a high fat content

- Rich in linoleic acid to give the piglet a shiny aspect.
- Sticks to the mouth and nose of the inquisitive piglets.
- Encourages early feed intake.