

# TGE Ag

## Transmissible Gastroenteritis virus antigen

Transmissible gastroenteritis (TGE) is a viral disease of the small intestine that causes vomiting and diarrhea in pigs of all ages. The infection spreads rapidly by aerosol or contact exposure. Severe epidemics are more common during winter due to survival of the virus in colder temperatures. Depending on the level of immunity and exposure, diarrhea may be mild in some litters but severe in others. Because TGE virus is easily spread during an epidemic by persons, animals, and other means, fast diagnosis and special care should be taken to prevent spread to unexposed groups of pigs and to neighboring herds. Current clinical signs in the epidemic form of TGE usually justify a presumptive diagnosis. In the mild endemic form, laboratory confirmation is required. The Anigen Rapid TGE test kit has been developed to provide fast and reliable test results of TGE antigen in field conditions.



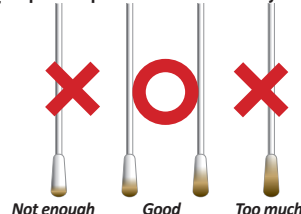
## Indications

- Differential diagnosis of swine diarrheal disease
- TGE field monitoring
- Tentative diagnosis for swift control in outbreak suspected situation

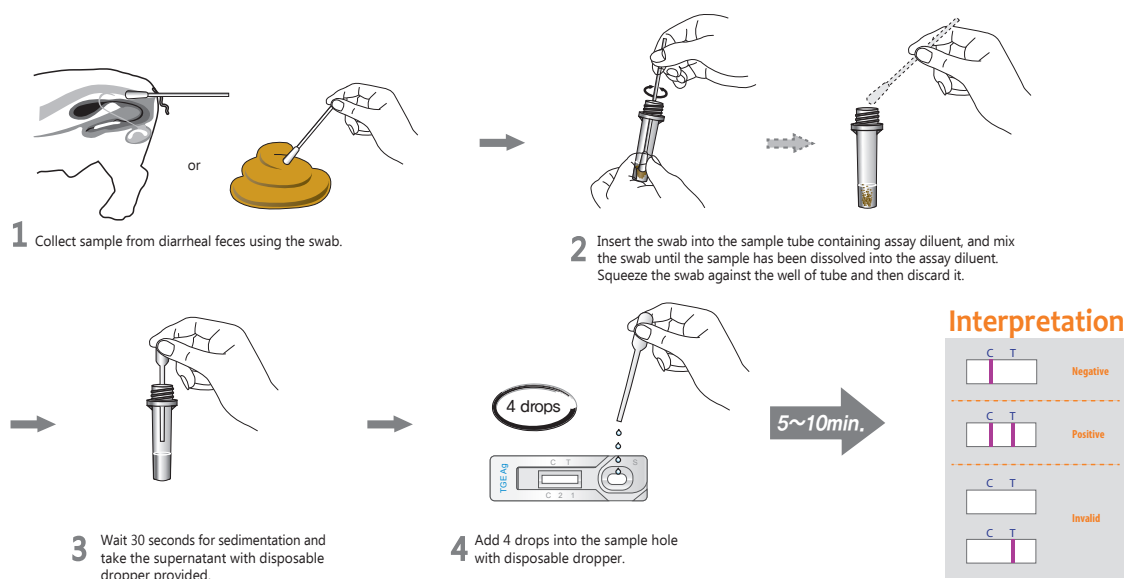
## Special Features

- No cross reaction with other etiologic agents
- World's first & sole TGE virus antigen rapid test kit
- Specimen : Diarrheal feces
- Sensitivity: 92.1% vs. RT-PCR
- Specificity: 95.2% vs. RT-PCR

[Proper sample amount collected by a swab]



## Test Procedures



## Ordering Information

Cat. No.	Description	Type	Packing size
RG14-02DD	Rapid TGE Ag	Device	1 Test x 10/Kit
RG14-03DD	Rapid TGE/PED Ag	Dual Device	1 Test x 10/Kit