

BoviD-5 Ag

Bovine Rota, Corona, E.coli K99, Cryptosporidium, Giardia antigen

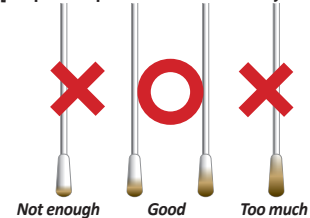
Newborn calves are susceptible to neonatal calf diarrhea especially during their first 3~4 weeks of life. Bacteria, viruses and parasites, by attacking the lining of the calf's intestine, give rise to diarrhea. It is one of the major financial damage factors in bovine farms, because once infected this decreases the absorption of essential nutrients from milk and leads to weight loss and dehydration. Generally, calf diarrhea is considered as an emergency situation that requires swift diagnosis and rehydration. One of the key features of a rapid test kit is the "rapidity" of the test result, thus BoviD- 5 Ag is an ideal test in these situations.



Indications

- For differential diagnosis of calf diarrhea
- Calf diarrhea etiologic agent monitoring in field
- For immediate treatment required cases

[Proper sample amount collected by a swab]

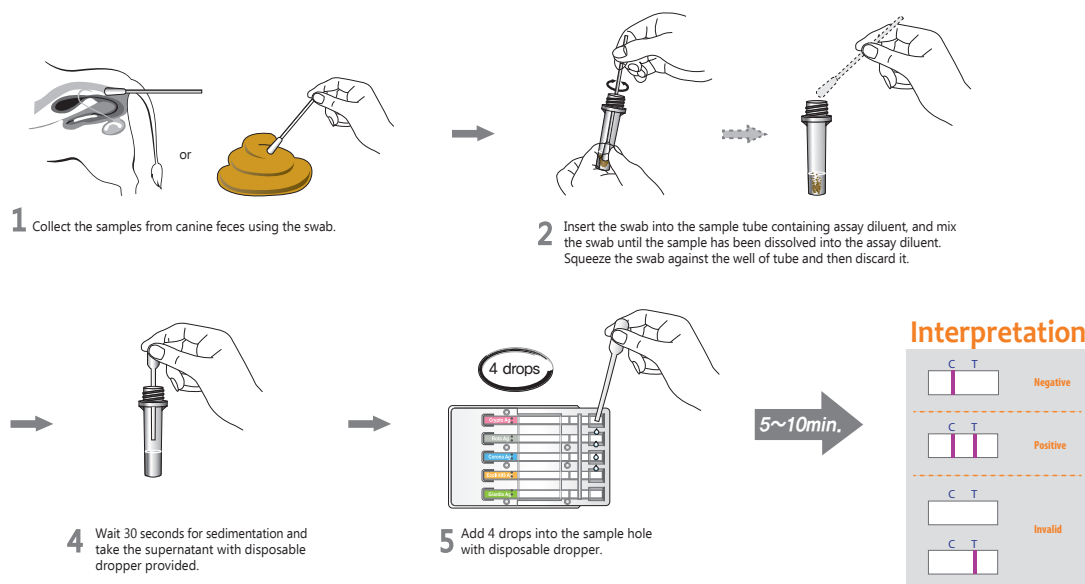


Special Features

- Useful tool for ruling out the cause of calf diarrhea
- Specimen : Diarrheal feces
- No cross reaction with other etiologic agents of calf diarrhea
- Sensitivity and Specificity : see table

	Sensitivity	Specificity	
<i>Cryptosporidium</i>	98.2%	99.0%	vs.PCR
Rotavirus	99.0%	98.0%	
Coronavirus	98.4%	98.0%	
<i>E.coli K 99</i>	97.8%	99.0%	
<i>Giardia</i>	92.1%	99.1%	vs.ELISA

Test Procedures



Ordering Information

Cat. No.	Description	Type	Packing size
RG13-02DD	Rapid BoviD-5 Ag	Device	1 Test x 10/Kit
RG13-01DD	Rapid BoviD-4 Ag	Device	1 Test x 10/Kit